



St. Georges Golf and Country Club

## Integrated Course Control

***One Interface. Expansive Possibilities.***

From the leader in golf course irrigation comes another game-changing innovation. With the Integrated Control Interface Plus (ICI+) and ICI+LINK from Rain Bird, you can bring the intelligent IC System™, Two-Wire Satellites and LINK™ (wireless) Satellites all onto the same interface. Rain Bird® ICI+ and ICI+LINK open up new and less disruptive ways to renovate or expand your course with the IC System.





INTEGRATED COURSE CONTROL

### Three Options in One Interface

Manage Rain Bird Two-Wire Satellites, LINK Satellites, IC System or any combination of all three from one interface.

### An Easier Way to Upgrade

Extend the life of your current Rain Bird satellite system and get the latest in irrigation technology without a complete overhaul.

### Unmatched Wireless Capabilities

Enjoy greater design flexibility without communication wires and license requirements with the ICI+LINK and LINK 900 MHz radios.

## Integrated Course Control

With the ability to bring together Rain Bird's intelligent IC System™, Two-Wire Satellites and LINK™ (wireless) Satellites, the Rain Bird® ICI+ is the industry's first integrated interface. This revolutionary interface is ideal for phased-in renovations or expansions, offering a less disruptive and more economical way to add the IC System and IC Sensor Devices (IC CONNECT™) to an existing Rain Bird satellite system.

### SPECIFICATIONS

#### ICI+ Electrical Specifications

- 115 VAC:** Nominal 98-132 VAC
- 220-240 VAC:** Nominal 208-255 VAC
- 100 VAC:** Nominal 91-110 VAC

#### Maximum Wire Paths

- Cirrus™:** 12 interfaces, 48 wire paths
- Nimbus™ II:** 8 interfaces, 32 wire paths
- Stratus™ II:** 2 interfaces, 8 wire paths<sup>1</sup>
- StratusLT™:** 1 interface, 1 wire path

**Wire Path Sizing:** Follow the "Rain Bird IC System Design Guide" for wire path sizing

**Satellite Compatibility:** ICI+ and ICI+LINK compatible with Rain Bird MSC+, PAR+ and PAR+ES Satellite models<sup>2</sup>

#### IC/Satellite Integrated System:

- Multiple Interface:** Nimbus II or Cirrus, version 8.1.0 or higher, required if operating multiple interfaces
- Single Interface:** Stratus II, Nimbus II or Cirrus, version 8.1.0 or higher required if operating a single interface

#### Dimensions:

- ICI+ Interface:**
- Height:** 12.7 in (32.2 cm)
- Width:** 14.3 in (36.4 cm)
- Depth:** 5.8 in (2.3 cm)

#### Environment:

- Indoor Installation Only**
- Operating Temperature:** 14° F to 125° F (-10° C to 51° C)
- Storage Temperature:** -40° F to 150° F (-40° C to 65° C)
- Operating Humidity:** 75% max at 40° F to 108° F (4.4° C to 42° C)
- Storage Humidity:** 75% max at 40° F to 108° F (4.4° C to 42° C)

**Output Voltage:** 26-29 VAC



## Integrated Control Interface Plus (ICI+) NEW

Upgrade without a major overhaul with ICI+ and ICI+LINK. Make it affordable to expand or renovate your course—extending the life of your current system.

### HOW TO SPECIFY — ICI+

ICI+	—	XXX
MODEL		POWER (Two-Wire Model Only)
ICI+ = Two-Wire		100=100 VAC
		120=120 VAC
		230=230 VAC
ICI+LINK = Wireless		

Model	A IC System Capacities		+	B Satellite Capacities		≤	C IC/Satellite Capacities*		D LINK Satellite Capacities**	
	Max Wire Groups	Max ICMs		Max Wire Groups	Max Stations		Max Wire Groups	Max Stations	Max Wire Groups	Max Stations
ICI+	4	3000		4	2688		4	3000	—	—
ICI+LINK	—	—		—	—		—	—	4	2688
ICI+LINK & ICI+ Driver Board	2	1500		2	1344		2	1500	4	2688

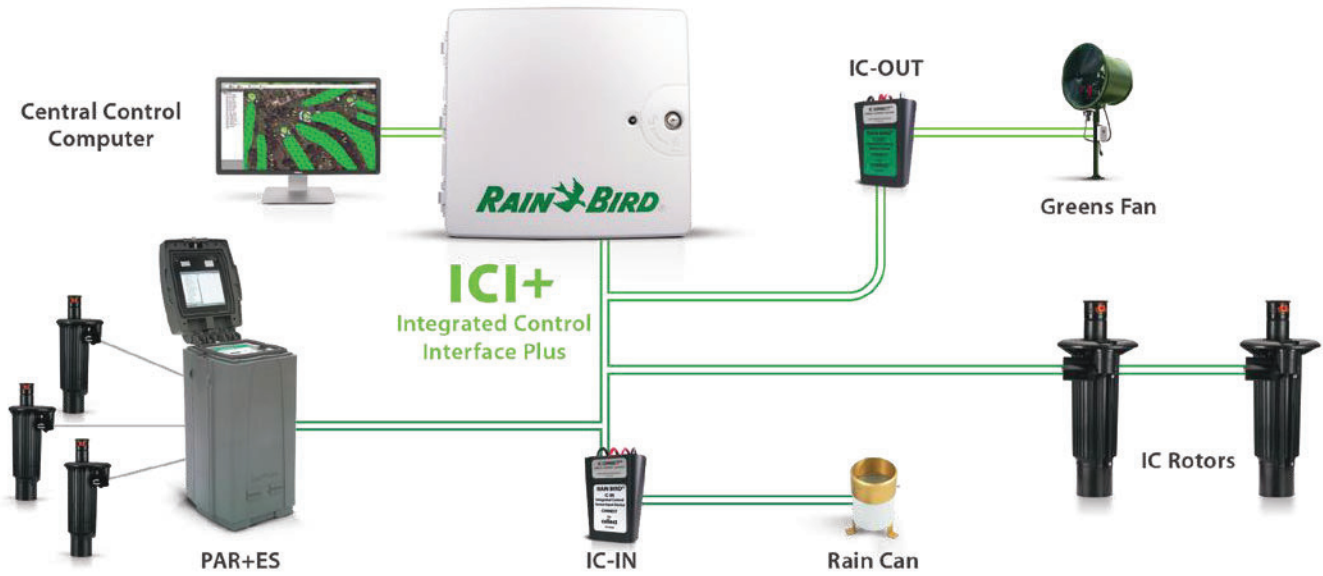
\*In a system that includes both ICMs and Satellites, the total number of stations must not exceed those indicated by table C. \*\* Total Interface capacity equals Maximum Combined ICM and Satellite Stations plus LINK Satellite Stations (total of table C + table D).

1. Purchase of additional wire path key code required. 2. The IFX Satellite Board is standard in all Rain Bird PAR+ES Satellites manufactured after 12/22/19 and is compatible with all PAR+ES, PAR+ and MSC+ Satellites. To add the IC System to an ICI+LINK with LINK Satellite System, simply install an ICI+ Two-Driver Board (sold separately), connect the MAXI Cable to the interface, then add IC Rotors, IC Valves or IC CONNECT devices to the MAXI Cable.



### Access the Latest Technology

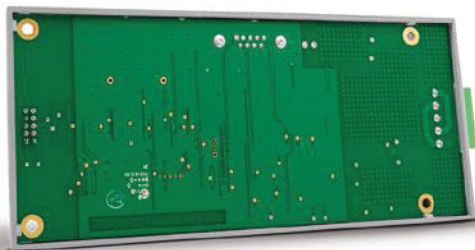
Add IC Rotors, IC Valves and IC CONNECT onto your existing Rain Bird satellite system with the industry's only complete course solution. With IC CONNECT, you can manage integrated control sensor inputs to collect information from your course and turn non-irrigation products on and off.



INTEGRATED COURSE CONTROL

### IFX Satellite Board NEW

By updating your existing Rain Bird® MSC+, PAR+ and PAR+ES Controllers with the IFX Satellite Board\*, you now have the ability to add IC Rotors and Valves by simply tapping into the existing satellite MAXI™ Cable.



**IFX**  
 CONNECTED



\*The IFX Satellite Board is standard in all new Rain Bird PAR+ES Satellites and is compatible with all MSC+, PAR+ and PAR+ES Satellites.